



SACXS FACTS



A MONTHLY PUBLICATION

DEDICATED TO THE ADMIRATION, STUDY, AND PROLIFERATION OF CACTI AND SUCCULENTS

Our Meetings are held on the third Wednesday of each month except
April, June and December,
At the San Antonio Garden Center at Funston and New Braunfels Avenue,
Doors are open at 6:30 P.M., reception at 7:00, Meeting/program at 7:30.

Meeting – Wednesday, January 21 2004

Presidents Message: Happy New Year Everyone!

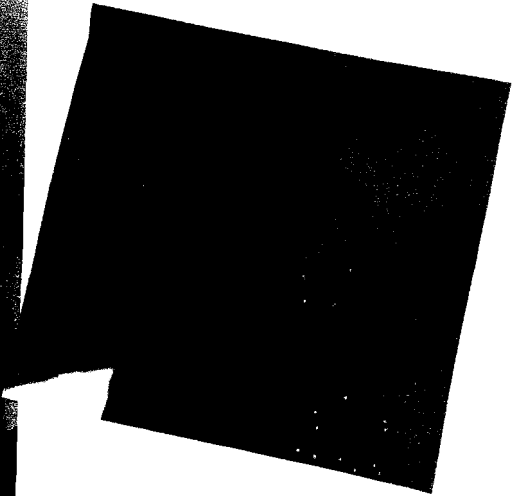
I hope you all had a memorable Holiday season. And let's hope for peace and, yes prosperity in the New Year. We had a wonderful club Christmas party in December. The club supplied the meat, and delicious side-dishes were brought in to add to the meal. We had plenty of everything, including the cutest chocolate mice brought in by **Ann and Jimmy Black, and her mother**, who was visiting. **Al Lindner** brought his world-famous pecan macaroons. **Linda Perez** brought in Spanish rice and **Linda Vasquez** brought tamales and a pea salad to round out the meal. Forgive me if I can't remember now all the goodies that were there, but I'm sure we all agree it was delicious and plentiful. A big thank you goes out to **Sherry Fotopoulos** for the great job she did in MCing the gift exchange. Lots of laughs were exchanged; the best presents. We collected a pile of Blue Santa gifts for deserving kids too. THANK YOU one and all for your contributions.

On the horizon for the New Year, I see the Show and Sale in April. **Lucile Lively and Scott Busby** are getting the committees drawn up. This year we will ask for more help from the membership. You will not be expected to work alone, because we are all in this together. We'll need set-up and clean-up crews. Also, those who would greet the visitors at the doors. We need volunteers to help out at the auction and in the kitchen. All will agree it's fun, especially when there are more hands helping. It's our big chance to show off these wonderful plants. Let's all jump in!

That's it for now. Isn't this weather great? Good cactus weather! Most of our plants are dormant, except those few winter-growers that get the spotlight.

Ann Dickey 531-0463

SACXS Christmas party at Ann's Saturday December 13th



Photos by Bobby Crabb

PROGRAM: "Native Ferns of Texas". By Susan Tracy.

Our speaker Susan Tracy is from Medina, Texas. She describes herself as a fern enthusiast. She will give a digital presentation as well as have native ferns for close-up examination. Susan is a long time member of the Native Plant Society of Texas and a frequent contributor to State and national publications regarding oak wilt, ferns and native grasses.



JANUARY

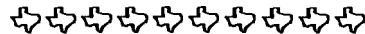
REFRESHMENTS:

* Ernie Akers – 521-5772
 Joanne Anderson - 830-438-3347
 Steve Bailey – 227-5867
 Sara Baker – 653-1491
 Bar-Yadin – 289-3310 cell

AUCTION PLANTS

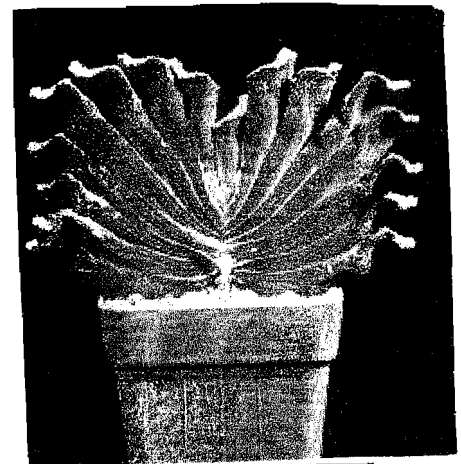
* Richard & Carol Blocker - 829-0585
 Ann & Jimmy Black – 830-336-2075
 Bill Bauta & Mary Bos
 Dawn & Chris Braune- 654-4594
 Scott Busby & Carol Duke - 860-9533

Any Questions? Call Norma Tindall 695-8090. * denotes Chairman – Who will call committee members to coordinate. The committee for refreshments brings the punch & snacks. SACXS furnishes everything else. Besides bringing refreshments, chairman & committee should see that the kitchen is left in the clean condition it was found in & garbage placed in containers outside the back door. Proceeds from the raffle & auction plants help pay the rent.



**If you are new, just as I am, too!
 Not knowing what to do, but willing to
 Here is a clue!**

Talent-not much-the Big Top
Arrive-early-April
Be-on time Botanical Gardens
Leave-late-Let me know (**Scott Busby 210-860-9533**)
Envoy-of the club-Early bird gets the cacti worm
SET-UP - SACXS Show and Sale



Haworthia truncata

April 22, 23 and 24th.

Setup - 9:00 am to 4:00 pm on Wednesday the 21st.

Sale hours: 9:00 am to 4:00 pm Thursday and Friday

9:00 am to 3:30 pm Saturday

Titanopsis

By Eric Driskill - Henry Shaw C&S, St Louis, MO

South and Southwest Africa are the home of the genus Titanopsis, with its 8 species of dwarf clump-forming plants. The species have variously colored leaves with rough, fissured, pimply ends, and they form low, clustering rosettes. Yellow flowers are produced in autumn. They grow quickly from seed and require a porous compost and careful watering, being kept dry in the winter and spring resting period. It is a very rewarding succulent and can be cultivated on windowsills in the home. Titanopsis also tolerate intense heat and heavy frost.

Titanopsis are truly impressive plants, with unique leaves. Being a dwarf, you won't have to devote much space for an impressive representation of the genus. Titanopsis would make a great plant to enter in the Mini Succulents class of the show.

Titanopsis calcarea is the best-known species, with whitish tubercles at the tips of blunt leaves. They are propagated from seed or by division of larger clumps. You can also purchase a mature plant from various nurseries.

For a really odd succulent that is sure to be a conversation piece, find a Titanopsis to add to your collection whether it is in a greenhouse or on a windowsill.

From CSSA Archives

Scientific Name: *Aloinopsis setifera* (L.Bolus) L.Bolus ; Synonym: *Titanopsis setifera*;
Family: *Aizoaceae*

Minimum Avg. Temperature: 50°F (10°C)

Heat Tolerance: Questionable in Phoenix, afternoon shade in summer

Origin: South Africa (Little Namaqualand)

Growth Habits: Clumping rosettes, leaves 0.8 inch long (2 cm)

Watering Needs: Aloinopsis are winter growers, keep dry and cool in summer.

Propagation: Seeds, cuttings



Scientific Name: *Titanopsis calcarea* (Marl.) Schwant.

Synonym: *Titanopsis calcareum*

Family: *Aizoaceae*



Recommended Temperature Zone:

USDA: 9b-12

Frost Tolerance: Hardy to 25°F (-4°C)

Heat Tolerance: Light shade in Phoenix, in summer

Sun Exposure: Light shade

Origin: South Africa (Bushmanland, Upper Karoo)

Growth Habits: Mat forming succulent, rosettes up to 3 inches in diameter (8 cm),

Watering Needs: Moderate water when growing in late fall and early spring. Keep somewhat dry the rest of the time

Propagation: Seeds

Scientific Name: *Titanopsis hugo-schlechteri* Tischer ;

Synonym: *Mesembryanthemum hugo-schlechteri*, *Verrucifera hugo-schlechteri*; *mesembryanthemum astridae*; Family: *Aizoaceae*

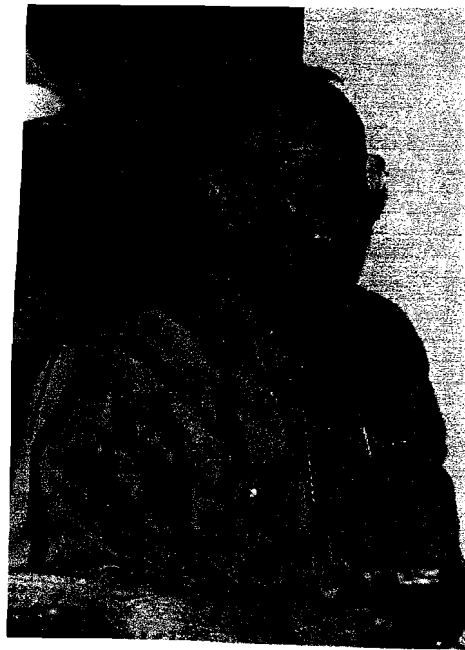
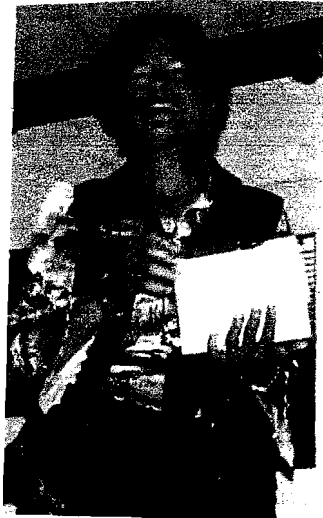
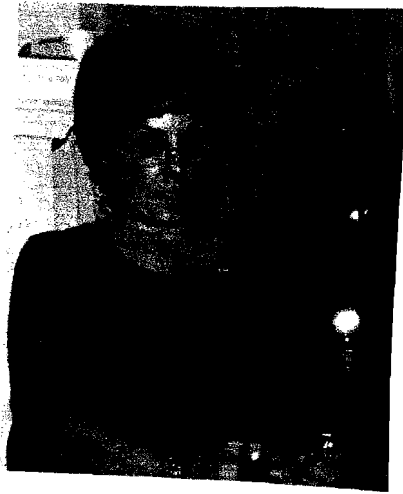
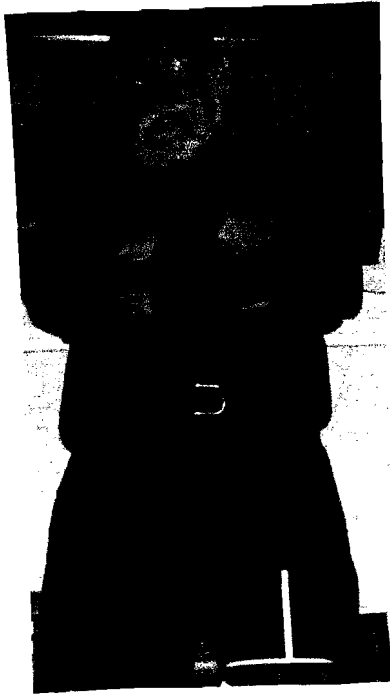
Temperature zone 9b-12 <> Hardy to 25 degrees <> Light shade

Origin – South Africa, Namibia <> Watering needs – moderate when Growing in late fall & early spring. Somewhat dry the rest of the year.

Propagation: seeds



<http://www.desert-tropicals.com>



Happy Birthday!!

ROSALINDA ERICKSON - 1ST, NATALIE FAGARASON - 5TH, DORIS SANTEE - 5TH
MAUREEN MASSARA - 6TH, NANCY RUPE 13TH, PAT MURPHY - 14TH
CORA OFFER - 19TH, TONI VANCE - 22ND NATHAN SCARBER - 24TH
INGA DICKSON - 25TH,

Welcome two New Members!!!! Ray Fletcher & David Smashey

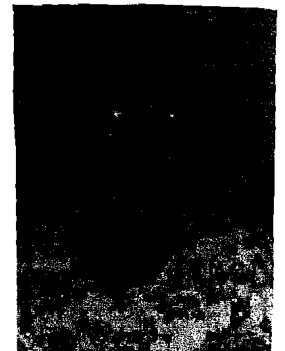


I Remember You Bessie Quick, My Friend

The days, hours and minutes pass
But, when I look at you my fair lass,
In my mind you will be here forever
I know now, I could never say never.

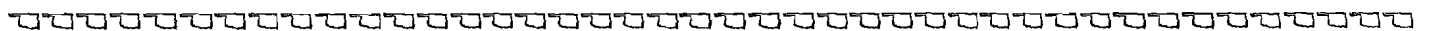


Our time together, the time stood still
We never thought we had a dept to fulfill
Life is so short here on earth
Never thinking we will have to go after birth.



You came into my life as a stranger
Like the baby that lay sleeping in a manger.
Now you are gone without a goodbye
I Hope to see you again or I will cry.

By Doris Santee



Ingredients for the Mississippi Mice --- Sliced Almonds, Large Maraschino cherries with stems, Wilton White Candy Melts (Chocolate Candy Melts can be used for brown-bodied "mice") Hershey's Hugs Kisses - Hugged by White chocolate for striped-headed "mice (Use plain chocolate kisses for brown-head "mice). Keebler Fudge Shoppe Deluxe Graham's Fudge-Covered Graham Crackers, Betty Crocker Decorating Gel (Pink or Red)

STEPS IN PREPARATION: 1.) Unwrap all ingredients, melt Wilton White Candy Melts as per instructions on package, and rinse-and dry cherries. 2.) Dip a cherry into the melted Wilton White Candy Melts icing. 3.) Place the dipped-in-icing cherry on top of a Keebler Fudge Shoppe Deluxe Graham's Fudge-Covered Graham Cracker. 4.) Place Hershey's Hugs Kiss—Hugged by White Chocolate for striped headed "mice" - snugly against the base (opposite the stem or "tail" end) of the dipped-in-icing cherry on top of Keebler Fudge Shoppe Deluxe Graham's Fudge-covered Graham cracker. 5.) To make "mice ears", select two whole almond slices to place between the Hershey's Kiss and the base (opposite the stem or "tail endd) of the dipped-in-icing cherry. 6.) Use Betty Crocker Decorating Gel (Pink or Red) to make the "mouse eyes" and "mouse nose" on the Hershey's Kiss.

(Thanks to Ann & Jimmy Black & her mother (with credit to Jerry Parsons)



President	Ann Dickey	adickeysa@yahoo.com	210-531-0463
1 st Vice President	Bobby Crabb (Programs)	bobcrabb@yahoo.com	210-531-0463
2 nd Vice President	Norma Tindall (Membership)		310-695-8090
3 rd Vice President	Doug Coates (Field Trips)	dcoat961@ix.netcom.com	210-659-7279
Recording Secretary	Ann Black	ablack@gvtc.com	830-336-2075
Publicity Secretary	James Roberts	jhrobertsjr@aol.com	830-980-4107
Treasurer	JoAnn Anderson		830-438-3347
Director	Barbara Schultze		830-281-5766
Director	Don Clark	dclark4647@aol.com	210-496-7810
Director	Doris Santee	dorcats@swbell.net	210-723-7823
Show Chairman	Lucile Lively	lucilelively@satx.rr.com	210-655-0971
Librarian	Paul Kibler		210-658-7561
Historian Secretary	Linda Vasquez		210-533-7553
Botanical Garden Rep	Lucile Lively		210-655-0971
Garden Center Rep	Sidney Yarbrough	gerald.yarbrough@prodigy.net	210-435-7057
Fiesta Commission Rep	Claude Townsend	cht1930@yahoo.com	210-655-8959
Treasurer's Report Auditor	Don Clark	dclark4647@aol.com	210-496-7810
Newsletter Editor	Norma Tindall	artleo@juno.com	210-695-8090
(Deadline for input to next newsletter 31 January)			FAX - 210-695-4502

"I've learned that I still have a lot to learn !!" from Live & Learn & Pass it On

Norma Tindall – SACXS FACTS Editor
 P O Box 733
 Helotes, Tx 78023-0733



2004